

SERIAL AND ENGINE NUMBER PLATE

• 88RC 139260 •

The serial number and engine number are the same on the 1948 Ford truck and are located on the glove box door and on the left side of the frame near the steering gear mounting bracket. The first four digits indicate the year, series and number of cylinders.

SERIES/BODY STYLE	ENGINE
PREFIX	
Sedan delivery6.....	88HA
F-1, 1/2-ton.....6.....	87HC
F-2, 3/4-ton.....6.....	87HD
F-3, 3/4-ton HD6.....	87HY
F-4, 1-ton.....6.....	87HT
Sedan Delivery.....8.....	889A
F-1, 1/2-ton.....8.....	88RC
F-2, 3/4-ton.....8.....	88RD
F-3, 3/4-ton HD8.....	88RY*
F-4, 1 ton.....8.....	88RTL

THE FIRST DIGIT in the serial number prefix is an 8(eight) for the year 1948.

THE SECOND AND THIRD DIGITS are either 7H, which denotes a 6-cylinder engine or 8H which denotes an 8-cylinder engine — except the sedan delivery which carries a 9(nine), the passenger car style serial number sequence.

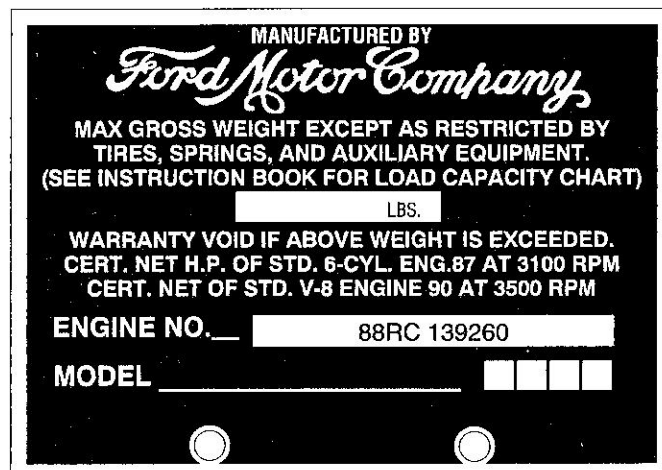
THE FOURTH DIGIT is a letter which identifies the model line, ie. A — passenger, C — 1/2 ton and Y — 3/4 ton and the 1 ton which carries a T.

THE LAST SIX DIGITS indicates the production sequence.

* Effective with engine 87H number 110141, Ford replaced the Y with the letter D to identify the F-2 series 3/4-ton truck.

RATING PLATE

The rating plate attached to the glove box door on each model indicates the maximum gross vehicle weight, certified net horsepower at specified r.p.m., engine series and model identification number.



THE MAXIMUM GROSS VEHICLE WEIGHT indicates the maximum gross vehicle weight in pounds.

SERIES	TYPE	G.V.W. (LBS.)
—	Sedan Delivery.....	—
F1	Conventional.....	4,700
F2	Conventional.....	5,700
F3	Conventional.....	6,800
F4	Conventional (single wheel).....	7,500
F4	Conventional (dual wheel).....	10,000

SEDAN DELIVERY

TYPE	MODEL NO.	NO. CYL.
Sedan Delivery.....	87HA.....	6
Sedan Delivery.....	87HA.....	8

F-1 SERIES

TYPE	MODEL NO.	NO. CYL.
Pickup.....	8HC-83.....	6
Pickup.....	8RC-83.....	8
Panel.....	8HC-82.....	6
Panel.....	8RC-82.....	8
Stake.....	8HC-86.....	6
Stake.....	8RC-86.....	8
Platform.....	8HC-80.....	6
Platform.....	8RC-80.....	8
Chassis-cab.....	8HC-81.....	6
Chassis-cab.....	8RC-81.....	8